

Anti-CBP tag Rabbit Polyclonal antibody

Product	Unit	Cat.#
Anti-CBP tag Rabbit Polyclonal antibody	100 μ l	MF532-01

【Storage】 : Shipped at 4°C. Store at -20°C. Stable for 12 months at -20°C.

【Storage Buffer】 : Solution in 0.01 M phos-phate buffered saline, pH 7.4, containing 15 mM sodium azide.

【Background】 : Calmodulin binding peptide tag antibody. Calmodulin binding peptide (CBP) tag is a fusion protein that is useful for immunoaffinity purification of proteins expressed in E.coli. The CBP tag binds to calmodulin resin in the presence of low concentration of calcium and can be eluted with a neutral buffer.

【Immunogen】 : Synthetic CBP tag peptide: KRRWKKNFIAVSAA, conjugated to KLH.

【Concentration】 : 100 μ g at 1 mg/ml.

【Reactivity】 : Mouse, Rat, Human.

【Applications】 : Suitable for: WB.

【Isotype】 : Rabbit IgG

【Purity】 : Protein A purified.

【Clone number】 : Polyclonal

【Predicted Molecular Weight】 : Detects a band of approximately 46 kDa.

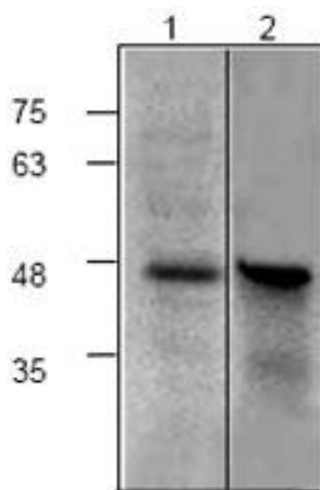
【Recommended Dilutions】

Western blot: 1/500-1/1000.

【Reference】 : No

【Application Data】

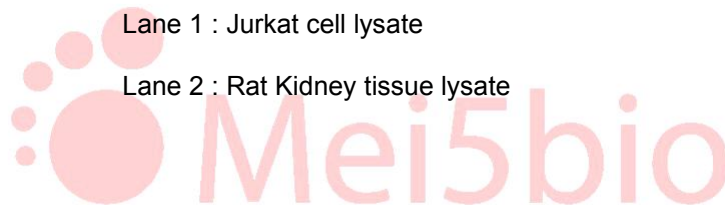
A. Western blot - Anti-CBP tag Rabbit Polyclonal antibody.



Western blot analysis of CBP expression at 1/500 dilution.

Lane 1 : Jurkat cell lysate

Lane 2 : Rat Kidney tissue lysate



Please note: All products are "FOR RESEARCH USE ONLY AND ARE NOT INTENDED FOR DIAGNOSTIC OR THERAPEUTIC USE"

