

M5 HiPure pET28a(+)表达载体 vector, N-末端、C-末端 His6 双标签 使用说明书

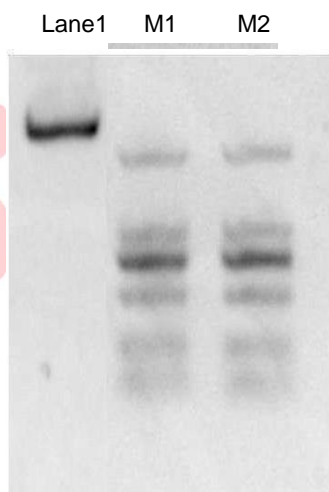
| Product | Unit | Cat.# |
|---|---------------------------|-------------|
| M5 HiPure pET28a(+)表达载体 vector, N-末端、C-末端 His6 双标签 | 10 μ l, 20ng/ μ l | MFV01002-01 |

保存: -20°C保存

描述: N-末端、C-末端 His6 双标签

成分: 10 mM Tris (pH8.0)

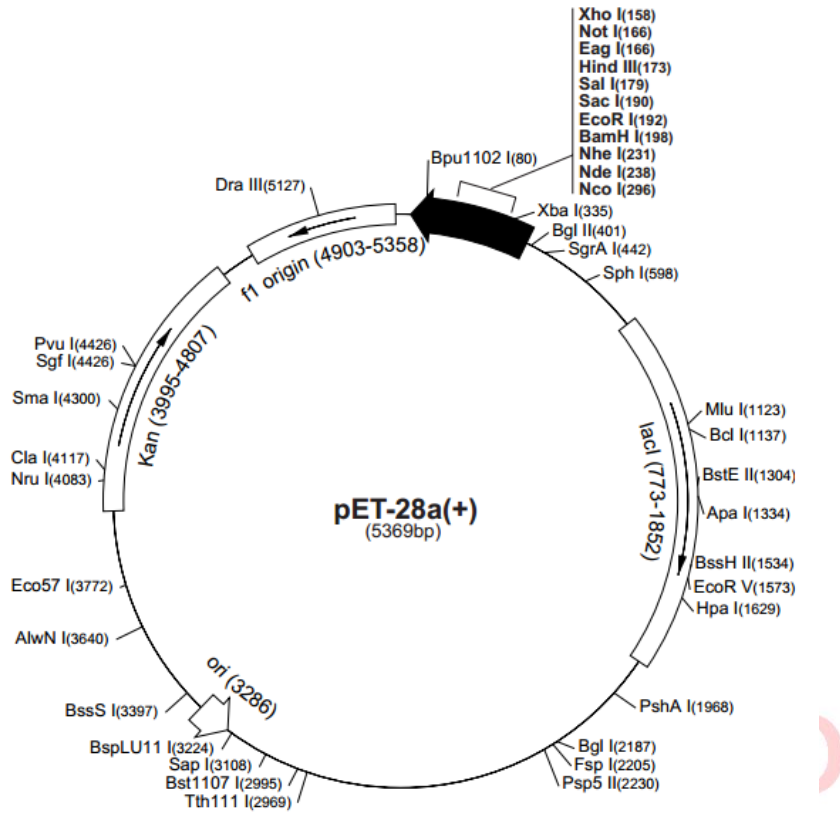
Gel electrophoresis of QC control:



1% Agarose Gel

Lane 1: pET28a(+); M1and M2: Linear DNA marker DL2000

Schematic map of pET28a(+)



Please note: All products are "FOR RESEARCH USE ONLY AND ARE NOT INTENDED FOR DIAGNOSTIC OR THERAPEUTIC USE"